

For each open utility cut of City streets, a \$325 permit shall be required from the City prior to occupancy and/or project acceptance.

1 inch

CITY OF WILMINGTON
NORTH CAROLINA
Public Services Engineering Division
APPROVED STORMWATER MANAGEMENT PLAN

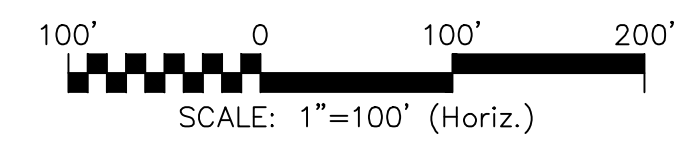
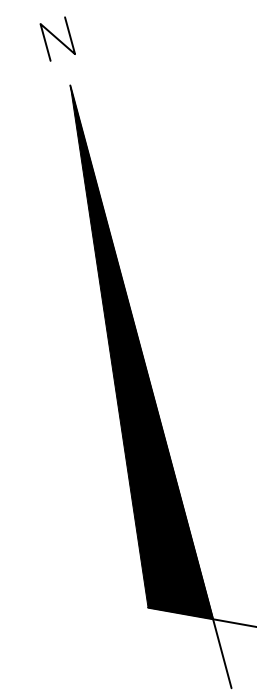
Date: _____ Permit # _____
Signed: _____

Approved Construction Plan

Name	Date
Planning	
Traffic	
Fire	

DEMOLITION NOTES:

- NO EARTH DISTURBING ACTIVITIES SHALL COMMENCE UNTIL ALL PERIMETER EROSION CONTROL MEASURES ARE IN PLACE IN ACCORDANCE WITH THE EROSION CONTROL SEQUENCE SHOWN IN THESE PLANS.
- NO EARTH-DISTURBING ACTIVITY OR OTHER WORK SHALL TAKE PLACE WITHIN WETLANDS AREAS NOTED ON SURVEY. CONTRACTOR SHALL FIELD VERIFY WETLAND LIMITS FLAGGING IS IN PLACE AND SHALL NOT ENTER WETLAND AREAS. IF WETLAND FLAGGING IS MISSING OR OTHERWISE DAMAGED, IT IS THE CONTRACTOR'S RESPONSIBILITY TO NOTE WETLAND LIMITS AND PREVENT DISTURBANCE OR OTHER ACTIVITY WITHIN WETLANDS.
- THE CONTRACTOR SHALL ASSUME RESPONSIBILITY FOR THE PROTECTION OF ALL PROPERTY CORNER MONUMENTS, AND SHALL HAVE, AT HIS EXPENSE, ALL CORNER MONUMENTS REPLACED WHICH ARE DISTURBED BY CONSTRUCTION ACTIVITIES.
- CONTRACTOR IS RESPONSIBLE FOR REPAIRS OF DAMAGE TO ANY EXISTING IMPROVEMENTS, AT HIS EXPENSE, DURING CONSTRUCTION, SUCH AS, BUT NOT LIMITED TO, DRAINAGE, UTILITIES, PAVEMENT, STRIPING, CURB, ETC. REPAIRS SHALL BE EQUAL TO OR BETTER THAN EXISTING CONDITIONS.
- CONTRACTOR SHALL COMPLY TO THE FULLEST EXTENT WITH ALL REGULATIONS GOVERNING THE DEMOLITION, REMOVAL, TRANSPORTATION AND DISPOSAL DO ALL DEMOLITION DEBRIS.
- CONTRACTOR SHALL COMPLY TO THE FULLEST EXTENT WITH THE LATEST OSHA STANDARDS FOR EXCAVATION AND TRENCHING PROCEDURES. CONTRACTOR SHALL USE SUPPORT SYSTEMS, SLOPING, BENCHING, ETC. AS NECESSARY FOR THESE OPERATIONS, AND SHALL COMPLY WITH ALL OSHA PERFORMANCE CRITERIA.
- CONTRACTOR SHALL TAKE SPECIAL CARE TO PROTECT ALL UTILITIES AND APPURTENANCES TO REMAIN.

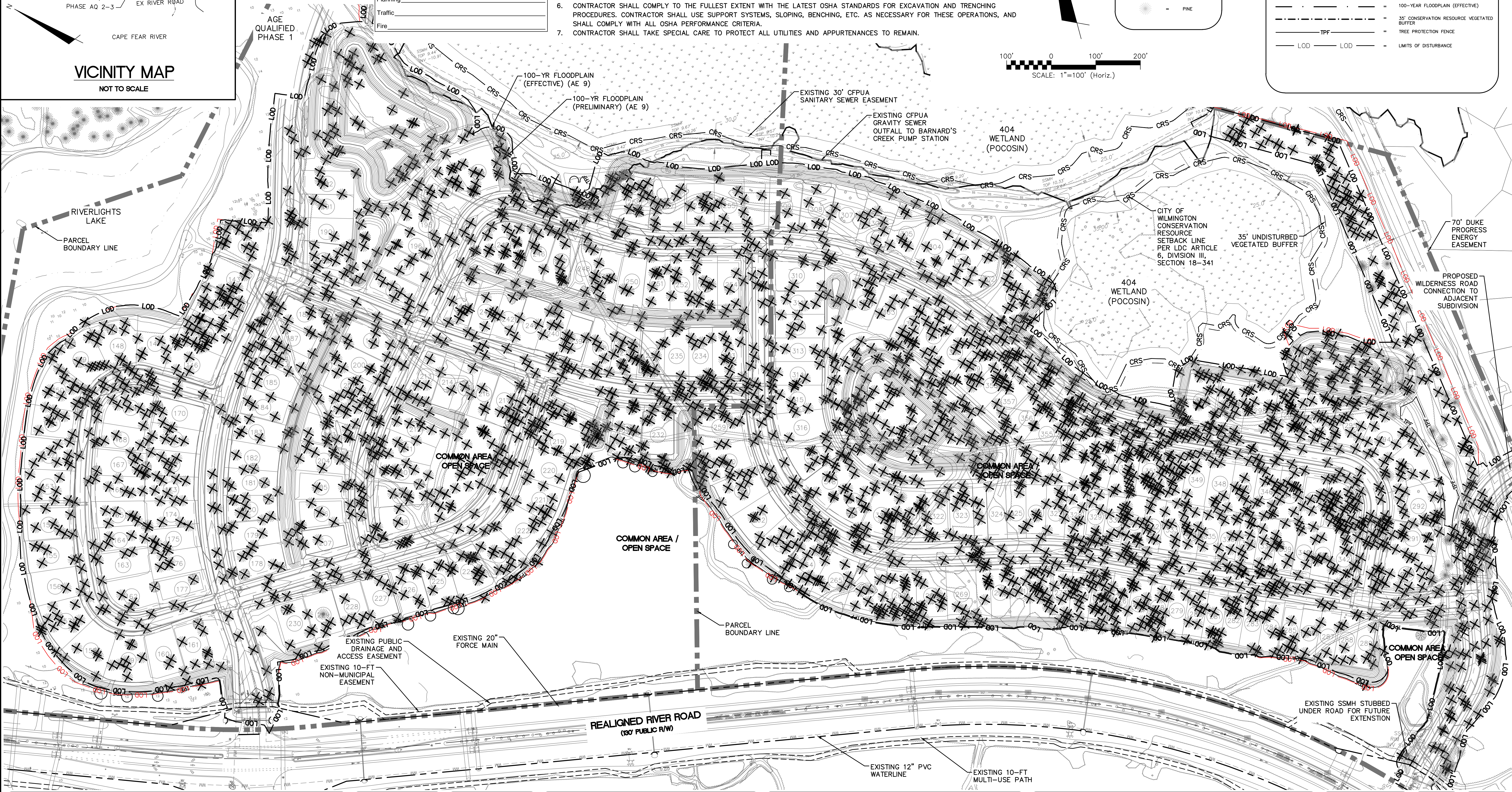


TREE LEGEND

- CEDAR
- GUM
- HOLLY
- OAK
- MAPLE
- PINE

LEGEND

- RBC - REBAR & CAP
- POWER POLE
- SANITARY SEWER MANHOLE
- WETLAND
- OVERHEAD ELECTRIC LINE
- CITY OF WILMINGTON CONSERVATION RESOURCE SETBACK LINE
- SANITARY SEWER MAIN
- 100-YEAR FLOODPLAIN (PRELIMINARY)
- 100-YEAR FLOODPLAIN (EFFECTIVE)
- 35' CONSERVATION RESOURCE VEGETATED BUFFER
- TPF - TREE PROTECTION FENCE
- LOD - LIMITS OF DISTURBANCE



REV. NO.	DESCRIPTIONS / REVISIONS	DATE
H	NEW HANOVER COUNTY EROSION CONTROL MODIFICATIONS	11/17/2016
G	CITY OF WILMINGTON STORMWATER RE-SUBMITTAL	11/11/2016
F	CAPE FEAR PUBLIC UTILITY AUTHORITY RE-SUBMITTAL	10/14/2016
E	CITY OF WILMINGTON TRC / OFPA RESUBMITTAL	09/29/2016
D	NEW HANOVER COUNTY EROSION CONTROL RE-SUBMITTAL	08/24/2016
C	CITY OF WILMINGTON TRC / STORMWATER / TREE REMOVAL, NEW HANOVER COUNTY EROSION CONTROL, AND CFPUA SUBMITTAL	06/29/2016
B	CITY OF WILMINGTON TRC	06/01/2016
A	CITY OF WILMINGTON SUBDIVISION REVIEW BOARD SUBMITTAL	01/08/2016

PRELIMINARY - DO NOT USE FOR CONSTRUCTION

SEAL

MCKIM & CREED
243 North Front Street
Wilmington, North Carolina 28401
Phone: (910)343-1048, Fax: (910)251-8282
License: F-1222
www.mckimcreed.com

RIVERLIGHTS
NORTH AMERICA SEKISUI HOUSE, LLC

RIVERLIGHTS - AGE QUALIFIED PHASE 2 & 3

TREE REMOVAL PLAN

DATE: 06/01/16	SCALE: 1"=100'	MAC FILE NUMBER: CX-102
MCE PROJ # 02735-0168	HORIZONTAL: 1"=100'	DRAWING NUMBER: 4
DRAWN: EEM/KCBE	VERTICAL: N/A	REVISION: G
DESIGNED: KCBE		
CHECKED: NAL		
PROJ. MGR: KCBE		
STATUS: FINAL DESIGN ISSUED FOR PERMITTING		